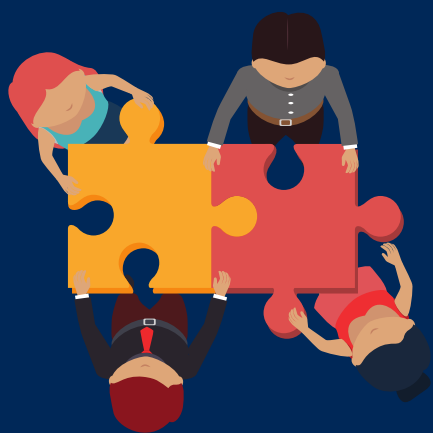


The **ULTRA**[©] Coaching Model



L = Leadership

Discovering
intrapreneurial
leadership vision



R = Resources

Developing the
intrapreneurial resource
plan



U = You

Develop intrapreneurial
self-insights



T = Tactics

Developing tactics to
achieve intrapreneurial
vision



A = Action!

Take action to
implement the
intrapreneurial plan

INTRAPRENEURHUB.COM



**INTRAPRENEUR
HUB**

Business Success Through People